

A wide-angle photograph of a large, modern indoor basketball court. The court has a polished wooden floor with white and red markings. In the background, there is a basketball hoop and backboard. The walls are made of dark corrugated metal, and there are several large windows along the back wall. The ceiling is high with exposed structural elements and several bright lights. The image is partially overlaid with a dark blue diagonal shape on the left and a pink geometric pattern on the bottom right.

# FEEDBACK TO APPLICANTS GREATER CITIES SPORT FACILITY FUND 2020/2021

Office of Sport  
July 2021



# WELCOME

- ▶ GCSFF Background, Objectives, Aims and Focus
- ▶ GCSFF 2020/21 Round One Summary
- ▶ The Process
  - ▶ Eligibility Check
  - ▶ Assessment Criteria
    1. Strategic Justification
    2. Project Scope & Inclusive Design
    3. Project Affordability
    4. Project Deliverability
- ▶ Review and prepare for 2021/22
- ▶ Supporting Documents
- ▶ SmartyGrants 2021/22 - new application platform
- ▶ Support for applicants - contacts





# THANK YOU

**Thank you** for your organisation's application under the Greater Cities Sport Facility Fund 2020/21.

We acknowledge the commitment, time and effort it takes to prepare and submit an application, and we appreciate your interest in this round.

The application process was highly competitive and, unfortunately not all projects could be successful.

Please consider the feedback on the 2020/21 round, if you are preparing an application for the 2021/22 round.





# GREATER CITIES SPORT FACILITY FUND BACKGROUND

- ▶ The NSW Government has established the Greater Cities and Regional Sport Facility Fund (GCRSFF).
- ▶ The Office of Sport is administering the GCRSFF as two streams:
  - ❑ Regional Sport Facility Fund
  - ❑ Greater Cities Sport Facility Fund
- ▶ The NSW Government committed \$50 million to the Greater Cities Sport Facility Fund over two-years.
- ▶ The Fund will help create spaces and facilities that enable communities to enjoy and take part in sport.

# BACKGROUND - OBJECTIVES, AIMS & FOCUS

## Objectives:

- ▶ Increase the number and type of sporting facilities
- ▶ Improve the standard of existing sporting facilities
- ▶ Increase participation in sport

## Aims:

- ▶ To increase participation in sport, through provision of universally designed, innovative and aspirational facilities
- ▶ To design and construct quality new sport facilities and upgrade and expand existing sport facilities for people and communities that need it most

## Focus:

- ▶ Universally designed and functional facilities for women and girls and removing barriers for people with disability
- ▶ On increasing capacity at well utilised sport facilities and developing multi-purpose facilities that incorporate environmentally sustainable design







## ROUND ONE: 2020/21 - SUMMARY

- ▶ 110 applications received

### Approved Projects

- ▶ 44 organisations were successful
- ▶ Just over \$29 million in 2020/21 was awarded

# THE PROCESS - THE CHECKS

## STAGE ONE – INITIAL ELIGIBILITY CHECK

- ▶ The first step in the assessment process is to undertake an eligibility check.
- ▶ All applications are required to meet the mandatory eligibility criteria.
- ▶ Unfortunately, a number of applications did not meet the mandatory eligibility criteria and the Grant Assessment Panel had to set these applications aside.
- ▶ The Expression of Interest Checklist, Fund Fact Sheet & the Program Guidelines available on the fund web page outline the Eligibility Criteria.

# 2020/21 GCSFF MANDATORY ELIGIBILITY

Below is a list of the mandatory eligibility requirements:

- ▶ Grant requested must be between \$100,000 - \$1 million.
- ▶ Applicant is an eligible organisation.
- ▶ Project is in an eligible location.
- ▶ Min 25% financial co-contribution of grant amount requested for projects costing over \$1 million.
- ▶ Statement of support from National/State Sport Organisation (NSO/SSO) or State Sport Organisation for people with disability (SSOD) for projects costing over \$5 million.
- ▶ Evidence of land ownership/tenure and landowner consent for the project.
- ▶ Eligible type of land.
- ▶ Eligible project type – (proposed expenditure is for eligible project costs).
- ▶ Evidence of approved and current Development Application or letter of exemption.
- ▶ Project Plan (< \$5 million) or Business Case (≥\$5 million) provided.



# 2020/21 GCSFF MANDATORY ELIGIBILITY - APPLICANTS

Eligible applicants are:

- ▶ 33 local government areas in Greater Sydney, Newcastle and Wollongong local government areas
- ▶ NSW State Sporting Organisations, State Sporting Organisations for People with Disability or the National Sporting Organisation where the state body is part of a unitary governance model
- ▶ Incorporated, community based not-for-profit sporting organisations (clubs and associations whose primary purpose is to organise sporting activities/deliver sport programs)
- ▶ Organisations providing sport and recreation programs that benefit the community such as PCYCs, YMCA and YWCA
- ▶ Organisations that own and administer public parklands
- ▶ Private enterprises

# 2020/21 GCSFF MANDATORY ELIGIBILITY - PROJECTS

Information on eligible and ineligible projects were outlined in the Program Guidelines.

- ▶ Refer to the Program Guidelines and supporting documentation to ensure all project components are eligible.
- ▶ Some applications were deemed ineligible because they fell under the minimum grant request due to ineligible project costs included the budget e.g. non-fixed equipment.

## Tip

If the project was part of a larger master/precinct plan strong applications clearly detailed:

- in scope project components and project scope excluded from the grant request and were part of the applicant's co-contribution as part of the site master plan.



# THE PROCESS - THE CHECKS

## STAGE TWO – ASSESSMENT CRITERIA

- ▶ Eligible applications were assessed against the following criteria:
  1. Strategic justification
  2. Project scope and inclusive design
  3. Project affordability
  4. Project deliverability
- ▶ The Grant Assessment Panel considered the extent to which the applicant addressed the assessment criteria and provided evidence.
- ▶ During the assessment of eligible applications by the Grant Assessment Panel, the Expressions of Interest generally fell into four categories: basic, good, strong, and very strong applications.
- ▶ The Grant Assessment Panel found that many applications were strong on 1, 2 or 3 of the assessment criteria but not on all criteria. The strongest applications were highly competitive on all four assessment criteria.

## CRITERIA 1: STRATEGIC JUSTIFICATION

Applications that address the strategic alignment with government and sport priorities are favourably considered. These include:

### **Federal Government priorities**

- ▶ Sport Australia

### **NSW Government priorities**

- ▶ Premier's Priorities
- ▶ Office of Sport priorities – strategic plan, Her Sport Her Way
- ▶ Other Government agencies' priorities e.g., Health, Education
- ▶ Greater Sydney Commission – District Plans

### **Council priorities**

- ▶ Community Strategic Plan
- ▶ Recreation Strategy
- ▶ Sportsground Strategy
- ▶ Social Plan
- ▶ The project's capacity to increase participation in sport and the use of sporting facilities
- ▶ The urgency and continuing need for the project to be delivered

### **Other**

- ▶ National/ State Sporting Organisation strategic plans, participation, facility



## STRATEGIC ALIGNMENT CONT.

- National sporting organisation/State sporting organisation plans – strategic, participation, facility
  - letters of support from all SSOs whose clubs use the facility
- Project objectives, outcomes and beneficiaries were clearly stated
- Project addressed aim and focus of the Fund
- Community and stakeholder engagement – letters of support
- Use of facility – current and projected
- Participation – current and projected
- Events – current, secured and projected
- Partners identified – what is their role? MoU signed ?
- Urgency and need – the case for investment now!

Strong applications provided evidence to support the application.

## CRITERIA 2: PROJECT SCOPE AND INCLUSIVE DESIGN

Strong applications provided:

- ▶ a clear scope of works proposed for the project.
- ▶ well considered documentation such as schematic and detailed design plans.
- ▶ outlined how the project incorporated any of the design principles identified in the Program Guidelines such as universal design principles, environmentally sustainable design and operational efficiencies in design.
- ▶ an outline of best practice approaches incorporated into the design, development and delivery of the project to ensure the project addressed the fund's aim and focus.
- ▶ explained placed-based planning showing the location of the project, if it is accessible, convenient and connected for priority user groups



## CRITERIA 3: AFFORDABILITY

### Key considerations

- ▶ Affordability of the project relative to the available funding, considering net lifecycle costs, allowing for ongoing operating and maintenance requirements.
- ▶ The robustness of project cost planning, how detailed and realistic the budget is, if other funding is secured and evidenced was provided, and if there is an existing plan and budget in place to manage project costs.
- ▶ Evidence from quotes/cost estimates/quantity surveyors
- ▶ The organisation capacity and financial sustainability to fund and manage ongoing operation and maintenance of the infrastructure over its lifetime.
- ▶ For projects over \$1 million, only applicants with a minimum financial co-contribution of 25% of the total grant amount will be considered. For other projects, a financial co-contribution will be viewed favourably.

## CRITERIA 4: DELIVERABILITY

Applicants need to demonstrate strong deliverability by detailing information and robust strategies including:

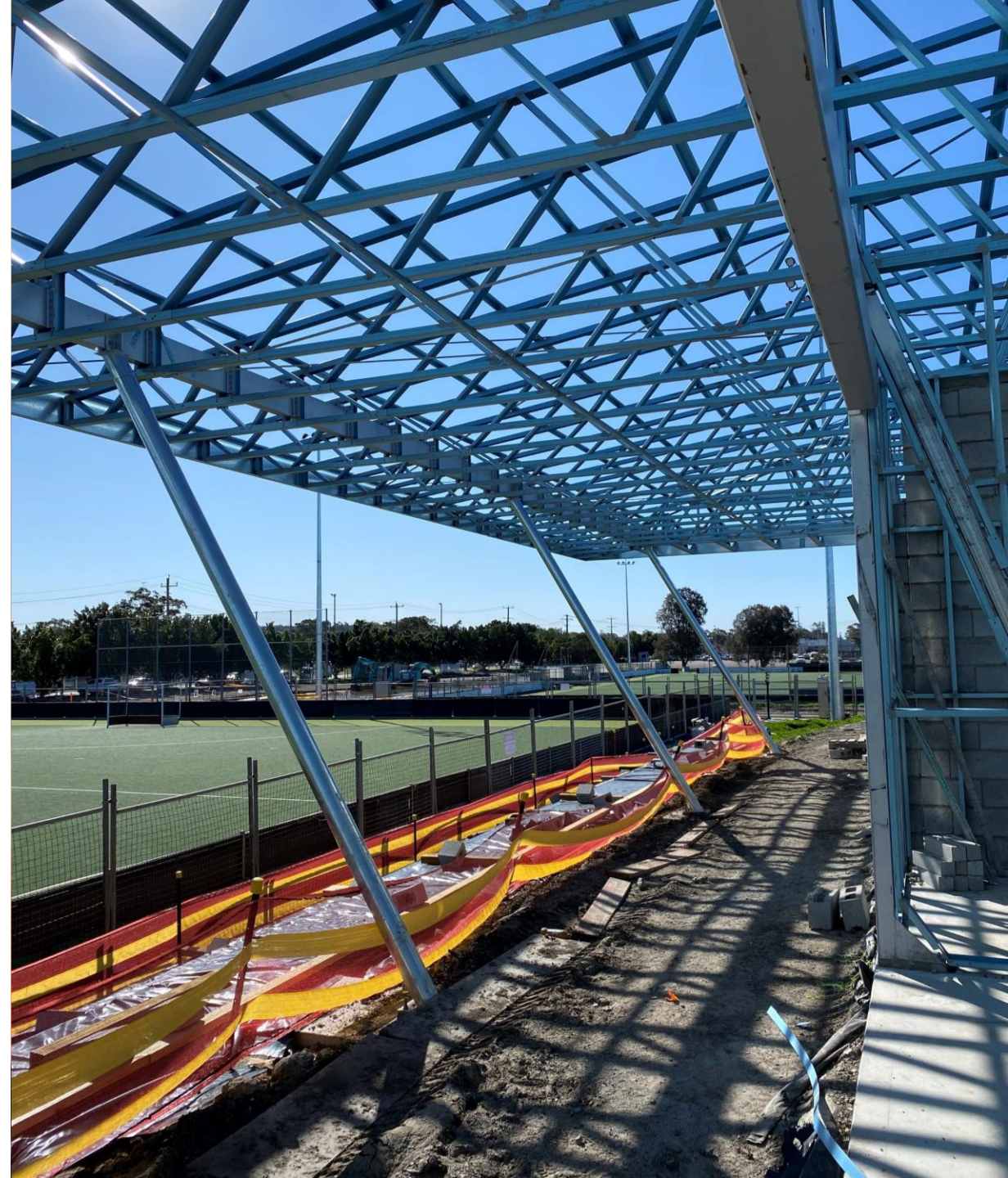
- ▶ project management including construction commencement within 6 months of executing the funding agreement. For example: implementation timetable, milestone dates, provide a Project GANNT Chart.
- ▶ status of the project re: the planning approval process – Current approved Development Application (DA) was provided as evidence, or a letter was provided from Council that a DA was not required.
- ▶ evidence of land ownership and landowner's consent.
- ▶ governance arrangements for any partnerships or leases.
- ▶ risk analysis – risk management policy and enterprise risk register
- ▶ procurement management approach and plan
- ▶ stakeholder engagement plan – who will you consult or inform and when
- ▶ demonstrate how any partnership model (including asset management) would be administered to deliver the project.
- ▶ Proven experience in delivering projects and delivery team skills and experience.

# PROGRAM INFORMATION AND APPLICATION RESOURCES

Take the opportunity to revisit the 20/21 resource materials:

- ▶ Program Guidelines
- ▶ Eligibility Checklist & Fact Sheet
- ▶ Frequently Asked Questions
- ▶ Eligible Local Government Areas List
- ▶ State/National Sporting Organisation Statement of Support Form
- ▶ Project Plan template
- ▶ Business Case Template and Simplified Business Case Guidelines
- ▶ Facility Usage Schedule

**Check the web fund page when the 2021/22 round 2 opens for the up-to-date resources. Ensure you address the 2021/22 eligibility and merit assessment criteria.**





# WE ARE MOVING TO SMARTYGRANTS

- ▶ Office of Sport will be moving to a new online grants portal. This portal is powered by SmartyGrants.
- ▶ Greater Cities Sport Facility Fund round 2 (2021/22) applications will be via the SmartyGrants platform.
- ▶ The SmartyGrant's online system is user friendly, registration is simple, and the completion of the new grants online application will be supported by instructions and hints.
- ▶ When the second round of Greater Cities Sport Facility Fund opens soon, please allow yourself time to familiarise yourself with this new portal and grant documentation and application process.

OFFICE OF SPORT



**WET  
WEATHER**

**THANK YOU**

Enquiries

[infrastructuregrants@sport.nsw.gov.au](mailto:infrastructuregrants@sport.nsw.gov.au)

13 13 02

